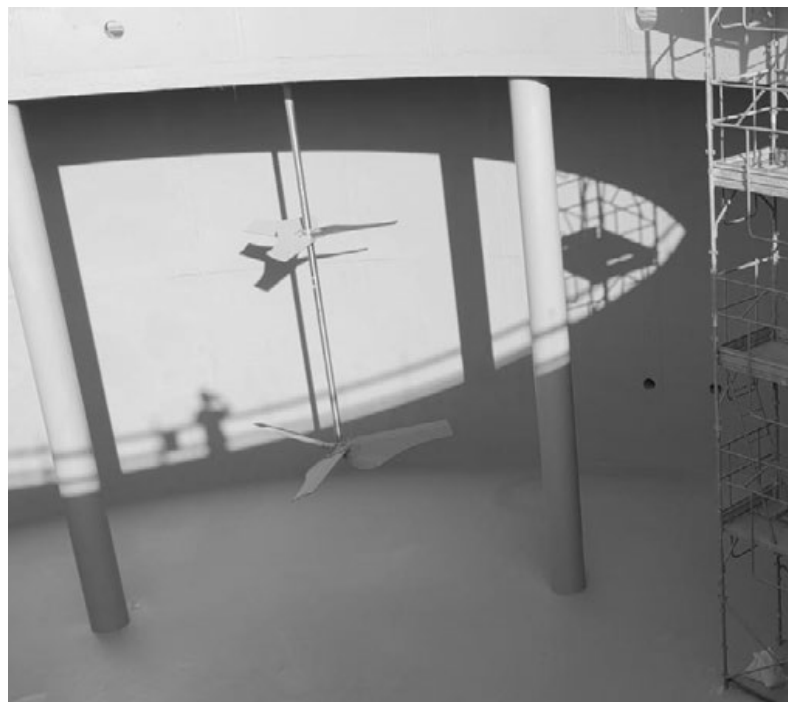




# HOT-APPLIED POLYUREA

ADVANCED SYSTEMS FOR  
WATERPROOFING  
PROTECTION  
CONTAINMENT  
SHIELDING  
CONSOLIDATION

# POLYUREA



Polyurea is a **two-component elastomeric resin** used for **waterproofing, containment, mechanical and chemical protection** of large and small surfaces in a variety of contexts.

Obtained through the chemical process of reaction between two components by polyaddition of an aromatic or aliphatic diisocyanate with a diamine, it is an **extra fast-curing system** applied by hot spraying.

The finale state is an **elastomeric solid coating without joints or overlaps**, 100% waterproof and **extremely resistant and flexible**.

Polyurea can be combined with different geotextiles to obtain **on site applied, seamless liners**.

It can also be completed with an aliphatic polyurethane topcoat to ensure **UV protection**.

# PROPERTIES



## **CRACK-BRIDGING CAPABILITY**

compensation of structural movements of buildings and / or expansion of the supports much higher than traditional waterproofing with epoxy or cement-based resins

## **HIGHLY ELASTIC MEMBRANE**

excellent resistance to impact, wear, high temperature and thermal shock

## **VERY FAST CURING**

it cures to the touch within a few minutes of application

## **IT CAN BE PIGMENTED**

## **HIGH CHEMICAL RESISTANCE**

ideal for situations with permanent contact with substances such as potable water, waste water; fuels and aggressive atmospheres; alcoholic beverages

## **APPLICABLE AT LOW TEMPERATURE AND HIGH HUMIDITY**

## **GOOD ADHESION TO MULTIPLE SUBSTRATES**

of any nature, dimension or type, also with complex shapes and contours





# WATERPROOFING



Roofs, attics, terraces, swimming pools, water parks



Tanks, reservoirs, pipelines, canals, dams, sluices, tunnels, piezometric towers



Tanks containing beverages, wine, beer, hydrocarbons, drinking water; digesters



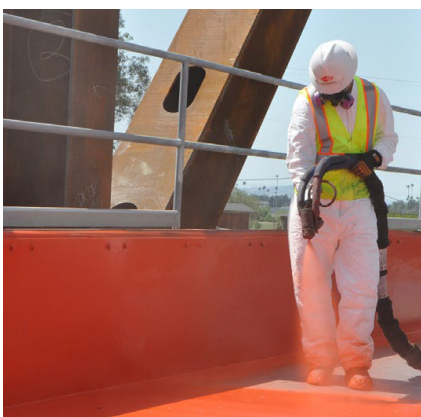
Plants for the containment and treatment of industrial, domestic, urban wastewater; runoff; washing water; dairy wastewater; vegetation water; cooling water; brine water; leather tanning water



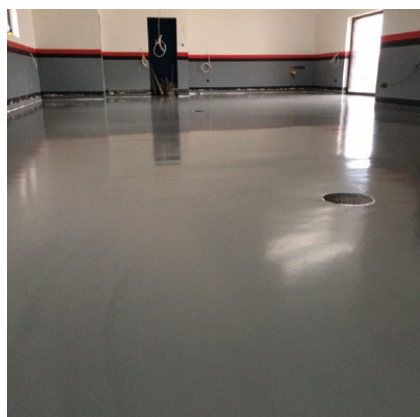
Stormwater treatment plants



Plants for the treatment of firefighting water



Bridges, road and railway decks



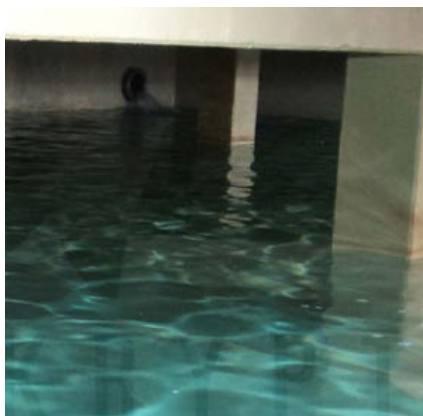
Industrial floors



Sludge treatment plants



# PROTECTION CONTAINMENT SHIELDING



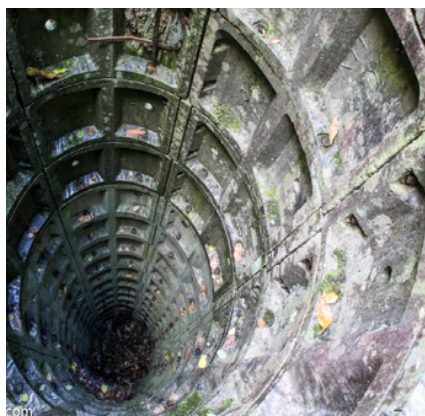
Tanks for liquids, wastewater, industrial water, irrigation water and drinking water



Plants for hydrocarbons, minerals, grains, salt, municipal and industrial waste and composting



Abrasion and impact resistant coatings



Anticorrosive coatings and blocking water infiltration with strong hydrostatic pressure



Passive protection against radon gas rising



Certified anti-hail solutions for the protection of flat roofs, domes, skylights, windows, greenhouses, etc.



Protective and waterproofing coating of concrete or metal structures and monoliths, intended for very long-term confinement of products with high environmental risk



Chemical and biological soil protection



Secondary containment for chemical release



# Idromet Sider

Products and services for  
aqueducts | gas pipelines | sewerages | industrial plants



**Idromet Service** is the brand of the division of **Idromet Sider** dedicated to the provision of **highly specialized services**.

With **over thirty years of experience**, Idromet is a valuable reference point for **companies, public authorities and private citizens** offering **innovative and customized solutions** and **comprehensive support** during every step of the execution process.

IDROMET SIDER SRL  
Strada San Giorgio Martire 22 D  
70132 Bari, Italy

Tel: 0805538888  
Fax: 0805538947  
Website: [www.idrometservice.it](http://www.idrometservice.it) - [www.idromet.it](http://www.idromet.it)  
Mail: [info@idrometservice.it](mailto:info@idrometservice.it)

FOLLOW US ON

